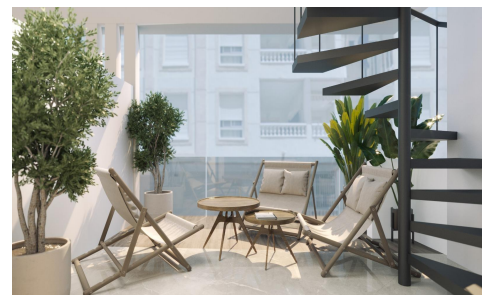




Penthouse in Torrevieja

€440,000



2



2



87m²



N/A



Modern New Build Apartments in the Heart of TorreviejaPrime Location Just 150 m from the SeaThis exceptional new development is located in the very centre of Torrevieja, just 150 m from the natural swimming pools and seafront promenade, and only 500 m from Playa del Cura. Surrounded by an extensive range of services including shops, supermarkets, parks, cafés and restaurants, the area offers everything you need within a short walk. Its combination of urban convenience and coastal tranquillity makes it one of the most attractive residential areas in the city.Contemporary Apartments With 1 and 2 BedroomsThe development offers modern apartments featuring 1 or 2 bedrooms and 1 or 2 bathrooms,...(Ask for More Details!)